

# **HYGREE Modular Toilet Solutions**



**2000 - Present**

**500+  
Projects**

**10,000+  
Cubicles**

**Across  
India**

**Prestigious  
Clientele**

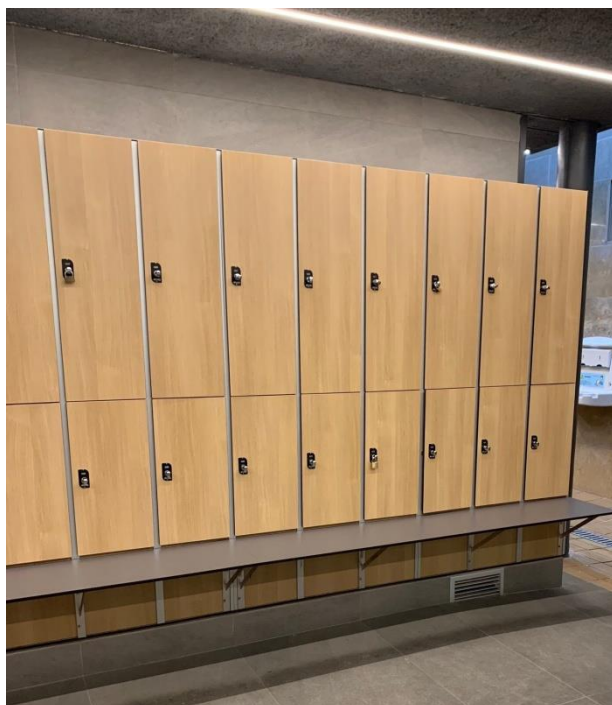
# Product Profile



Toilet  
Cubicles  
&  
Urinal  
Modesty  
Panels



Locker Systems



Container Rest Rooms



# Series of Toilet Cubicles

## [A] STAR NYLON SERIES



### Nylon Leg-type Model

Bottom Gap (mm)  
 Below Door : 150mm  
 Below Fr Panel : 150mm  
 Below Divider : 150mm

Sizes (mm)  
 [W x D x H]  
 [A1] 1000 x 1500 x 1980  
 [A2] 1000 x 1500 x 2280

Door, Divider, Front Panel	High Pressure Laminate [HPL]
Accessories & Channels	BLACK
• Gravity Hinges	- [Nylon, Steel reinforced]
• Leg Support [150mm]	- [Nylon, Steel reinforced]
• Lock w/occupancy indicator	- [Nylon, Steel reinforced]
• Door Knob	- [Nylon]
• Robe Hook	- [Nylon]
• Wall U-profile	- [Aluminium, powder coated black]
• Door h-profile	- [Aluminium, powder coated black]
• Corner F-profile	- [Aluminium, powder coated black]
• Top Support profile	- [Aluminium, powder coated black]
• Noise Deafening Tape	- Rubberized



**SMFG**  
IndiaCredit  
Pragati Ki Nayi Pehchaan



HYGREE

**Our work at SMFG India Credit, Mumbai [Part of Sumitomo Mitsui Group, Japan]**





## Our work at Chennai Trade Centre [TNTPO]





## Our work at Alphabet International School, Palavakkam





## Our work at Work EZ Co-working, OMR & Anna Salai



# Series of Toilet Cubicles

## [B] NOVA NYLON SERIES



### Nylon Floor Channel Model

Bottom Gap (mm)  
Below Door : 10mm  
Below Fr Panel : Nil  
Below Divider : Nil

Sizes (mm)  
[W x D x H]  
[B1] 1000 x 1500 x 1830  
[B2] 1000 x 1500 x 2130

Door, Divider, Front Panel	High Pressure Laminate [HPL]
Accessories & Channels	BLACK
• Gravity Hinges	- [Nylon, Steel reinforced]
• Floor U-profile	- [Aluminium, powder coated black]
• Lock w/occupancy indicator	- [Nylon, Steel reinforced]
• Door Knob	- [Nylon]
• Robe Hook	- [Nylon]
• Wall U-profile	- [Aluminium, powder coated black]
• Door h-profile	- [Aluminium, powder coated black]
• Corner F-profile	- [Aluminium, powder coated black]
• Top Support profile	- [Aluminium, powder coated black]
• Noise Deafening Tape	- Rubberized





## Our work at Embassy Tech Village, Bengaluru



# Series of Toilet Cubicles

## [C] SMART STEEL SERIES



### Stainless Steel AL Channel Model

Bottom Gap (mm)  
 Below Door : 120mm  
 Below Fr Panel : 120mm  
 Below Divider : 120mm

Sizes (mm)  
 [W x D x H]  
 [C1] 1000 x 1500 x 1950  
 [C2] 1000 x 1500 x 2250

Door, Divider, Front Panel	High Pressure Laminate [HPL]
Accessories & Channels	STAINLESS STEEL
• Door Hinges	- [SS 304]
• Leg Support [120mm]	- [SS 316]
• Lock w/occupancy indicator	- [SS 304]
• Door Knob	- [SS 304]
• Robe Hook	- [SS 304]
• Wall U-profile	- [Aluminum Anodized, SS Finish]
• Door h-profile	- [Aluminum Anodized, SS Finish]
• Corner F-profile	- [Aluminum Anodized, SS Finish]
• Top Support profile	- [Aluminum Anodized, SS Finish]
• Noise Deafening Tape	- Foam



## Our work at Rajiv Gandhi Airport Aero Technic, Hyderabad



# Series of Toilet Cubicles

## [D] COSMIC STEEL SERIES



### Stainless Steel Leg-type Model

Bottom Gap (mm)  
 Below Door : 120mm  
 Below Fr Panel : 120mm  
 Below Divider : 120mm

Sizes (mm)  
 [W x D x H]  
 [D1] 1000 x 1500 x 1950  
 [D2] 1000 x 1500 x 2250

Door, Divider, Front Panel	High Pressure Laminate [HPL]
Accessories & Channels	STAINLESS STEEL
• Door Hinges	- [SS 304]
• Leg Support [120mm]	- [SS 316]
• Lock w/occupancy indicator	- [SS 304]
• Door Knob	- [SS 304]
• Robe Hook	- [SS 304]
• Wall U-profile	- [SS 304]
• Door h-profile	- [SS 304]
• Corner F-profile	- [SS 304]
• Top Support profile	- [SS 304]
• Noise Deafening Tape	- Foam



Chennai Metro Rail Limited



HYGREE

## Our work at Chennai Central Metro – Green Line



## Our work at Anna Nagar East Metro – Green Line





Chennai Metro Rail Limited



HYGREE

## Our work at Wimco Nagar Metro – Blue Line (Extn.)



## Our work at Wimco Nagar & Tollgate Metro – Blue Line (Extn.)





**Our work at JLL – SunTec Group, Trivandrum**



## Our work at IIT-Madras Research Park, Chennai





## Our work at Indospace Logistics Parks, Oragadam





## Our work at Kerala State Infra Limited – Technocity Trivandrum



# Series of Toilet Cubicles



HYGREE

## [E] FLEX STEEL SERIES



### Stainless Steel Floor Channel Model

Bottom Gap (mm)  
Below Door : 10mm  
Below Fr Panel : Nil  
Below Divider : Nil

Sizes (mm)  
[W x D x H]  
[E1] 1000 x 1500 x 1830  
[E2] 1000 x 1500 x 2130

Door, Divider, Front Panel	High Pressure Laminate [HPL]
Accessories & Channels	STAINLESS STEEL
• Door Hinges	- [SS 304]
• Floor U-profile	- [SS 304]
• Lock w/occupancy indicator	- [SS 304]
• Door Knob	- [SS 304]
• Robe Hook	- [SS 304]
• Wall U-profile	- [SS 304]
• Door h-profile	- [SS 304]
• Corner F-profile	- [SS 304]
• Top Support profile	- [SS 304]
• Noise Deafening Tape	- Foam

**flex.**



**Our work at Flextronics DTA Factory, Sriperumbudur**



# Series of Toilet Cubicles

## [F] ELITE BOXOFINO SERIES



### Stainless Steel Shoe Box Model

Bottom Gap (mm)  
 Below Door : 100mm  
 Below Fr Panel : Nil  
 Below Divider : 100mm

Sizes (mm)  
 [W x D x H]  
 [F1] 1000 x 1500 x 1830  
 [F2] 1000 x 1500 x 2130

Door, Divider, Front Panel	High Pressure Laminate [HPL]
Accessories & Channels	STAINLESS STEEL
• Door Hinges	- [SS 304]
• L Clamp, End Cap Shoe Box [100mm]	- [SS 316]
• Lock w/occupancy indicator	- [SS 304]
• Door Knob	- [SS 304]
• Robe Hook	- [SS 304]
• Wall U-profile	- [SS 304]
• Door h-profile	- [SS 304]
• Corner F-profile	- [SS 304]
• Top Support profile	- [SS 304]
• Noise Deafening Tape	- Foam

**Vestas**



**Our work at Vestas, Chennai** [Part of Vestas Wind Systems AS, Denmark]





## Our work at Hyundai Steel Factory, Tiruvallur





## **Our work at Ampere Electric Experience Center, Ranipet**





# Series of Toilet Cubicles



HYGREE

## [G] ORION STEEL SERIES



### Stainless Steel Leg Type Model [with Top Bracket & Round Pipe]

Bottom Gap (mm)  
Below Door : 120mm  
Below Fr Panel : 120mm  
Below Divider : 120mm

Sizes (mm)  
[W x D x H]  
[G1] 1000 x 1500 x 1980  
[G2] 1000 x 1500 x 2280

Door, Divider, Front Panel	High Pressure Laminate [HPL]
Accessories & Channels	STAINLESS STEEL
• Door Hinges	- [SS 304]
• Leg Support [120mm]	- [SS 316]
• Lock w/occupancy indicator	- [SS 304]
• Door Knob	- [SS 304]
• Robe Hook	- [SS 304]
• Wall U-profile	- [SS 304]
• Door h-profile	- [SS 304]
• Corner F-profile	- [SS 304]
• Top pipe, Top Bracket, End Cap, Elbow	- [SS 304]
• Noise Deafening Tape	- Foam



**SRM**  
UNIVERSITY AP  
Amaravati



HYGREE

## Our work at SRM University, Amaravati





## Our work at Telangana State Secretariat, Hyderabad



# Series of Toilet Cubicles



## [H] STELLAR BOXOFINO SERIES



### Stainless Steel Shoe Box Model [with Top Bracket & Round Pipe]

Bottom Gap (mm)  
Below Door : 100mm  
Below Fr Panel : Nil  
Below Divider : 100mm

Sizes (mm)  
[W x D x H]  
[H1] 1000 x 1500 x 1860  
[H2] 1000 x 1500 x 2160

Door, Divider, Front Panel	High Pressure Laminate [HPL]
Accessories & Channels	STAINLESS STEEL
• Door Hinges	- [SS 304]
• L Clamp, End Cap Shoe Box [100mm]	- [SS 316]
• Lock w/occupancy indicator	- [SS 304]
• Door Knob	- [SS 304]
• Robe Hook	- [SS 304]
• Wall U-profile	- [SS 304]
• Door h-profile	- [SS 304]
• Corner F-profile	- [SS 304]
• Top pipe, Top Bracket, End Cap, Elbow	- [SS 304]
• Noise Deafening Tape	- Foam



**ASHOK LEYLAND**



HYGREE

## **Our work at Ashok Leyland HQ, Chennai**



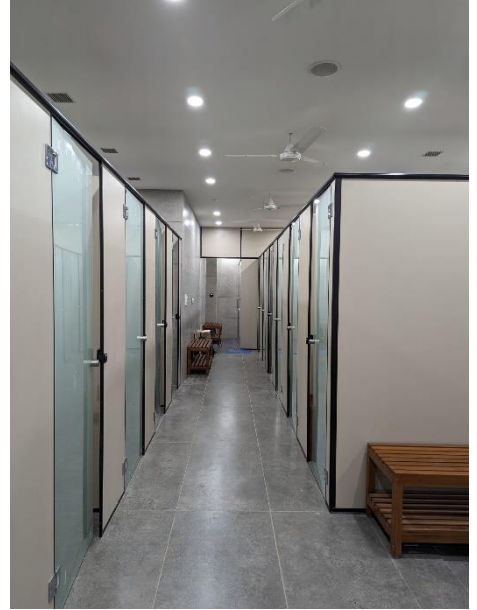


## Our work at Tamil Nadu Cricket Association (Chepauk), Chennai





**Our work at Tamil Nadu Golf Federation, Chennai**  
**Like never before: GLASS WITH HPL CUBICLES**



# Series of PD Doors

## [NP] STAR NYLON PD DOORS SERIES



Bottom Gap (mm)  
Below Door : 150mm

Sizes (mm)  
[W x H]  
[NP1a] 600 x 1830  
[NP1b] 600 x 2130  
[NP2a] 750 x 1830  
[NP2b] 750 x 2130  
[NP3a] 900 x 1830  
[NP3b] 900 x 2130

Door	High Pressure Laminate [HPL]
Accessories & Channels	BLACK
• Gravity Hinges	- [Nylon, Steel reinforced]
• Adaptor for Hinges	- [Nylon]
• Lock w/occupancy indicator	- [SS Finish]
• Door Knob	- [Nylon]
• Robe Hook	- [Nylon]
• Special PD Door profile for wall	- [Aluminium, powder coated black]
• Noise Deafening Tape	- Rubberized



# Series of PD Doors

## [SP] SMART STEEL PD DOORS SERIES



Bottom Gap (mm)  
Below Door : 150mm

Sizes (mm)  
[W x H]  
[SP1a] 600 x 1830  
[SP1b] 600 x 2130  
[SP2a] 750 x 1830  
[SP2b] 750 x 2130  
[SP3a] 900 x 1830  
[SP3b] 900 x 2130

Door	High Pressure Laminate [HPL]
Accessories & Channels	STAINLESS STEEL
• Door Hinges	- [SS 304]
• Adaptor for Hinges	- [Nylon, SS Finish]
• Lock w/occupancy indicator	- [SS Finish]
• Door Knob	- [SS 304]
• Robe Hook	- [SS 304]
• Special PD Door profile for wall	- [Aluminum Anodized, SS Finish]
• Noise Deafening Tape	- Rubberized

# Series of Urinal Dividers

## M1 URINAL DIVIDERS SERIES



Bottom Gap (mm)  
UD to Floor: 450mm

Sizes (mm)  
[H x WT x WB]  
[M1-A] 750 x 450 x 400  
[M1-B] 900 x 450 x 400  
[M1-C] 1200 x 450 x 400  
[M1-D] 1200 x 600 x 550

Urinal Divider	High Pressure Laminate [HPL]
Accessories	STAINLESS STEEL
• Urinal Clamps	- [SS 304]
• Screws to divider & wall	- [SS 304]
• Wall plugs	- PVC

# Series of Urinal Dividers

## M2 URINAL DIVIDERS SERIES



Bottom Gap (mm)  
UD to Floor: 450mm

Sizes (mm)  
[H1 x H2 x WT x WB]  
[M2-A] 750 x 690 x 450 x 400  
[M2-B] 900 x 840 x 450 x 400  
[M2-C] 1200 x 1140 x 450 x 400  
[M2-D] 1200 x 1140 x 500 x 360

Urinal Divider	High Pressure Laminate [HPL]
Accessories	STAINLESS STEEL
• Urinal Clamps	- [SS 304]
• Screws to divider & wall	- [SS 304]
• Wall plugs	- PVC

# Series of Urinal Dividers

## M3 URINAL DIVIDERS SERIES



Bottom Gap (mm)  
UD to Floor: 450mm

Sizes (mm)  
[H x WT x WB]  
[M3-A] 750 x 450 x 325  
[M3-B] 900 x 450 x 325  
[M3-C] 1200 x 450 x 325  
[M3-D] 1200 x 600 x 430

Urinal Divider	High Pressure Laminate [HPL]
Accessories	STAINLESS STEEL
• Urinal Clamps	- [SS 304]
• Screws to divider & wall	- [SS 304]
• Wall plugs	- PVC

# Series of Toilet Cubicles



HYGREE

## M11 URINAL DIVIDERS Frosted Glass



Bottom Gap (mm)  
UD to Floor: 450mm

Sizes (mm)  
[H x WT x WB]  
[M11-A] 750 x 450 x 325  
[M11-B] 900 x 450 x 325  
[M11-C] 1200 x 450 x 325  
[M11-D] 1200 x 600 x 430

Urinal Divider	Frosted Glass
<b>Accessories</b>	<b>BRASS IN CHROME FINISH</b>
• Urinal Clamps	- [Brass C.P.]
• Screws to divider & wall	- [SS 304]
• Wall plugs	- PVC

# Series of Toilet Cubicles



HYGREE

## M12 URINAL DIVIDERS Fluted Glass



Bottom Gap (mm)  
UD to Floor: 120mm

Sizes (mm)  
[H x WT x WB]  
[M12-A] 1980 x 550 x 550

Urinal Divider	Fluted Glass with Special Frame
<b>Accessories</b>	<b>Special Frame</b>
• Urinal Frame	- [MS Frame with P.C. Black]
• Screws to divider & wall	- [MS Black]
• Wall plugs	- PVC

# Series of Locker Systems



## ARMARIO LOCKER SERIES



### Armario Locker Series

Bottom Gap (mm) : Nil  
 Configurations (WxH):  
 3x2 | 3x3 | 3x4 | 3x6 | 4x2 | 4x3  
 4x4 | 6x3 | 6x4

Sizes (mm)  
 [W x H x D]  
 [AL1] 1830 x 1830 x 450  
 [AL2] 1830 x 1830 x 600

<b>Door, Horizontal Dividers</b>	<b>High Pressure Laminate [HPL] – 9mm</b>
<b>Back, Vertical Dividers</b>	<b>High Pressure Laminate [HPL] – 3mm</b>
<b>Accessories &amp; Channels</b>	<b>Stainless Steel &amp; ALUMINIUM SS Finish</b>
• Door Hinges	- [SS 304]
• Front Profile	- [SS 316]
• Back Profile	- [SS 304]
• Inner Half-Round Profile	- [SS 304]
• Lock	- [Standard CAM Lock]
• Noise Deafening Tape	- Foam

# What YOU Get



Quality Products



Competitive Pricing



Vast Experience



Understanding Customers' Needs



Environment Friendly Technologies



Technical Assistance



Installation Team



Prompt Delivery Schedules



Service Support



Ready Stocks

# The HYGREE Promise

**QUALITY**

**COMMITMENT**

**VALUE**



# Our Valuable Patrons



# Our Valuable Patrons



Architect  
Hafeez  
Contractor



# Our Valuable Patrons

## GOVERNMENT & PSUS



भारतीय विमानपत्तन प्राधिकरण  
AIRPORTS AUTHORITY OF INDIA

CHENNAI AIRPORT



TAMILNADU HIGHWAYS  
DEPARTMENT



Chennai Metro Rail Limited

CHENNAI METRO RAIL  
LTD.



S.E.T.C TAMILNADU  
(TRICHY)



BIRLA PLANETARIUM  
(CHENNAI)



MARINA BEACH  
(CHENNAI)



KERALA TECHNOLOGY  
INNOVATION ZONE (KOCHI)



DEPARTMENT OF POSTS  
(CHENNAI)



TECHNOCITY - KERALA  
STATE INFRASTRUCTURE  
LTD (TRIVANDRUM)



IIT  
(MADRAS)



IIT MADRAS RESEARCH  
PARK



PUNJAB NATIONAL BANK

## Quiz Time

1. In Nylon Cubicles, what material are the accessories & channels made of?
2. For IWC, which is the best series to select?
3. How are SmArt Steel, Cosmic Steel & Orion Steel Series different from one another?
4. Which series should you pick for the following and why:
  - a) Mall
  - b) School
  - c) Airport
  - d) Factory

**Winners Get Special Gifts!!**

## Conclusion

We at HYGREE are sure that we can offer a modular restroom solution for your projects, that represents an optimal combination of design, utility, aesthetics, and economics – truly blending function and form.

We look forward to work with the accomplished team members coming together to make your project a grand success.

Thank you for the opportunity to come here today and interact with your dynamic team.

## Thank You



HYGREE

## **HYGREE INDIA INDUSTRIES (P) LTD.**

 9094 8888 29 | 9094 662244 | 98410 41660

 projects@hygree.in | hygree@live.in

 www.hygree.in

 CHENNAI | BANGALORE | HYDERABAD | KOCHI