

# HYGREE Modern Washroom Solutions



**2000 - Present**

1000+  
Projects

25,000+  
Cubicles

Across  
India

Prestigious  
Clientele

# Product Profile



A.

## MODULAR TOILET SOLUTIONS

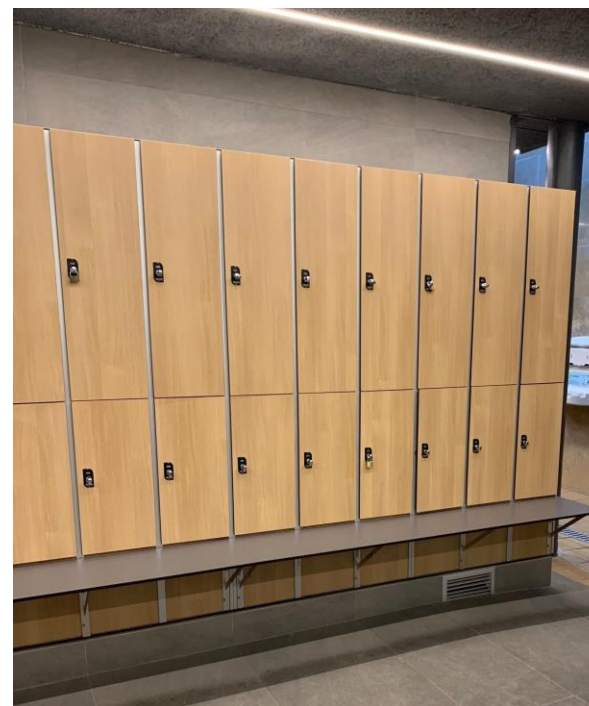
Toilet  
Cubicles



Urinal Dividers



Locker Systems



Container Rest Rooms



# Product Profile



Whirlpool  
Massage  
Bath Tubs



Steam Shower Cabins



Sauna Rooms



Steam Generator



+ Coming Soon ....

B.

WELLNESS  
PRODUCTS



# Product Profile



C.

## GLASS SHOWER ENCLOSURES

Sliding



Openable – Framed



Matte Black



Customized



# A. Modular Toilet Solutions



**SPACE  
SAVING**



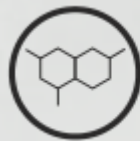
**SCRATCH  
RESISTANT**



**HEAT / BURN  
RESISTANT**



**WIDE RANGE  
OF COLOURS**



**CHEMICAL  
RESISTANT**



**GRAFFITI  
RESISTANT**



**IMPACT  
RESISTANT**



**WATER &  
HUMIDITY  
RESISTANT**



**QUICK  
INSTALLATION**



**LONG  
LASTING**

# A1. Toilet Cubicles

## STAR NYLON SERIES



## COSMIC STEEL SERIES



## LEG TYPE MODELS

### Key Features:

- Bottom Gap 120-150mm
- Easy to Clean
- Better Hygiene + Ventilation
- Quick Installation
- Colour options:
  - NYLON – Black, Grey, White
  - SS – Steel, Black, PVD Gold etc.



# A1. Toilet Cubicles

## NOVA NYLON SERIES



## FLEX STEEL SERIES



## FLOOR TYPE MODELS

### Key Features:

- NO Bottom Gap
- Enhanced Privacy
- Ideal for IWC / Change Rooms / Showers
- No water leakage between cubicles
- Sealant beneath bottom profiles

# A1. Toilet Cubicles

## ELITE BOXOFINO SERIES



## ELITE BOXOFINO – 18MM SERIES (NO TOP CH)



## FLOOR TYPE MODELS (PREMIUM)

### Key Features:

- Elegant SS Shoe Box look
- Suitable for Upscale Offices, Luxury Malls, Clubs, Lounges etc.
- 18mm models do not require top channel support



# A1. Toilet Cubicles

## ELITE BOXOFINO – FULL HEIGHT CUBICLES



## FULL-HEIGHT CUBICLES

### Key Features:

- Emerging trend among MNCs
- Enhanced Privacy
- Elegant Look, no top & bottom gaps



# A1. Toilet Cubicles

NOVA NYLON / COSMIC STEEL – HPL + GLASS

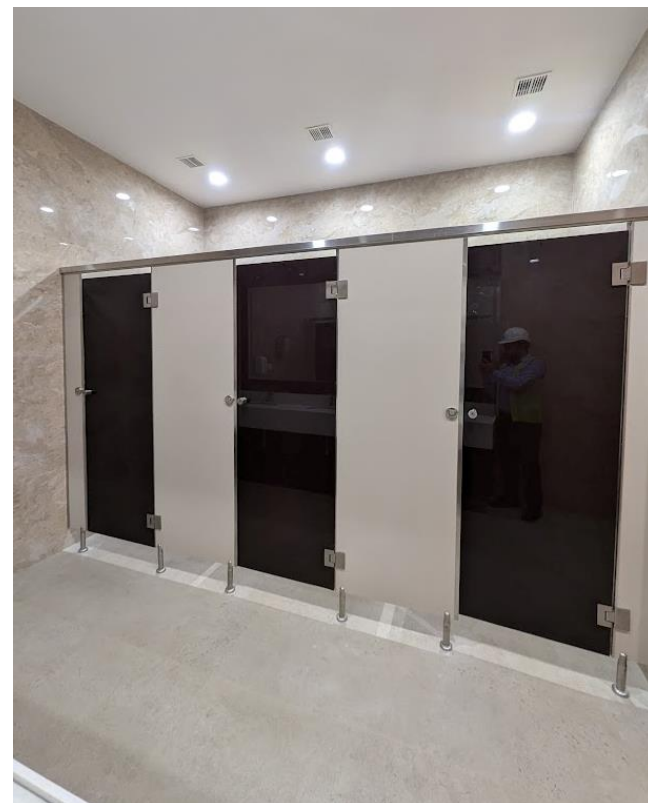


## HPL + GLASS CUBICLES

UNIQUE

Key Features:

- **Credit to NVA** for challenging us to develop this model
- Combines the Durability of HPL with the Refined Aesthetics and Versatility of Glass
- Endless possibilities with colours of HPL and types of glass, from frosted to lacquered to laminated to sandwich glass



# A1. Toilet Cubicles

## FULL GLASS WASHROOM CUBICLES



Architectural 3D Render

## FULL GLASS CUBICLES

### Key Features:

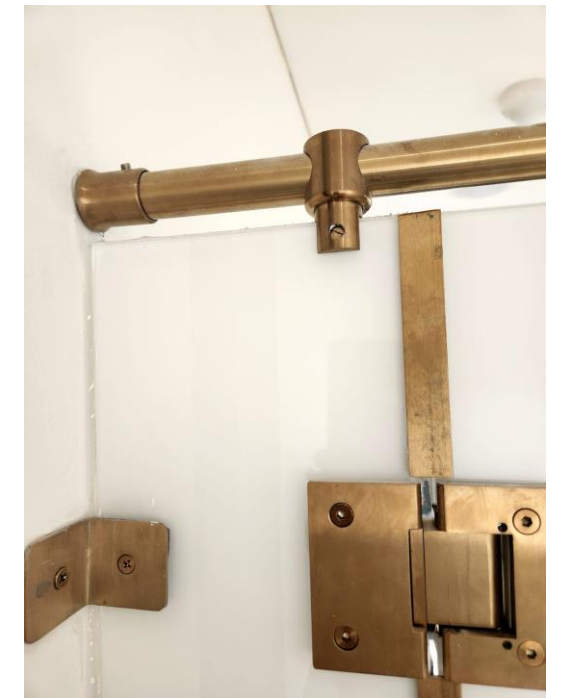
- Full Glass Washroom Cubicles represents a new dimension of luxury and stands out as a style statement
- Aesthetics & Versatility of Glass
- **Soft Close Hinges (NEW)**
- Endless possibilities with types of glass, from frosted to lacquered to laminated to sandwich glass and colours of hardware: Black, PVD etc.



# A1. Toilet Cubicles



## FULL GLASS WASHROOM CUBICLES



**Hardware Detail**

**What HYGREE Delivered**

# A1. Toilet Cubicles

## FULL GLASS WASHROOM CUBICLES



What HYGREE Delivered



INNER View



# A2. Urinal Dividers



## HPL URINAL DIVIDERS



## Customizable to various Shapes & Sizes





# A2. Urinal Dividers



## GLASS URINAL DIVIDERS

Customizable to various Shapes & Sizes



Frosted Glass – Special Frosting (frosted even if wet)

Lacquered Glass – Chocolate Brown





## A2. Urinal Dividers



### FULL-FRAMED FLUTED GLASS URINAL DIVIDERS



### Customizable to various Shapes & Sizes



# A3. PD Doors & Privacy Partitions



## PD DOORS – NYLON/SS



- Best-suited for renovation projects
- Blends traditional walls with modern HPL Doors (walls need not be demolished)
- Enhanced aesthetics using HPL Doors & modular accessories



# A3. PD Doors & Privacy Partitions

## PRIVACY PARTITION – SPECIAL DIVIDERS



# A4. HPL Modular Locker Systems



## HPL MODULAR LOCKERS

Ideal for Gym, Clubhouse, Sports Arena, Swimming Pool, Staff Area





# B1. Whirlpool Massage Bath Tubs



Shapes: Rectangle (1S/2S), Corner, Elliptical (Round)



New Edition: Fluted Side Panel



VALUE ADDITION FOR THE LIMITED EDITION





## B2. Freestanding Soaking Tubs



### Freestanding Soaking Bath Tubs



- Soaking tub benefits: Hydrotherapy
- Enjoy Bath Salts, Bath Bombs, Ice Bath, Cold Plunge from the comfort of your home

# B3. Steam Shower Cabins



**Rectangle / Corner; With / Without Integrated Bath Tub; Steam + Sauna Model**



**Standalone Steam Shower Cabins**

**No extra civil work required**



# B4. Steam Generator



## Customized Steam Rooms



## HYGREE Steam Generators

Turn any room into a steam room

6 / 9 / 12 / 15 kVA



# C1. Glass Shower Enclosures



## TOP SLIDING MODEL



### Key Features:

- Only Top Sliding Channel
- Smooth operation wheels
- Space saving
- Colour options available: Classic Chrome, Matt Black, Rose Gold, Champagne Gold, Brushed Matt
- Signature of ALL of HYGREE Glass Shower Enclosures → come with **Hydrophobic Nano Coat** – easy clean, longer life, enduring brightness of glass



# C1. Glass Shower Enclosures



## OPENABLE MODEL – CLASSIC



### Key Features:

- Classic Model
- Economical
- Highly Customizable

# C1. Glass Shower Enclosures



## OPENABLE MODEL – FULL FRAME



### Key Features:

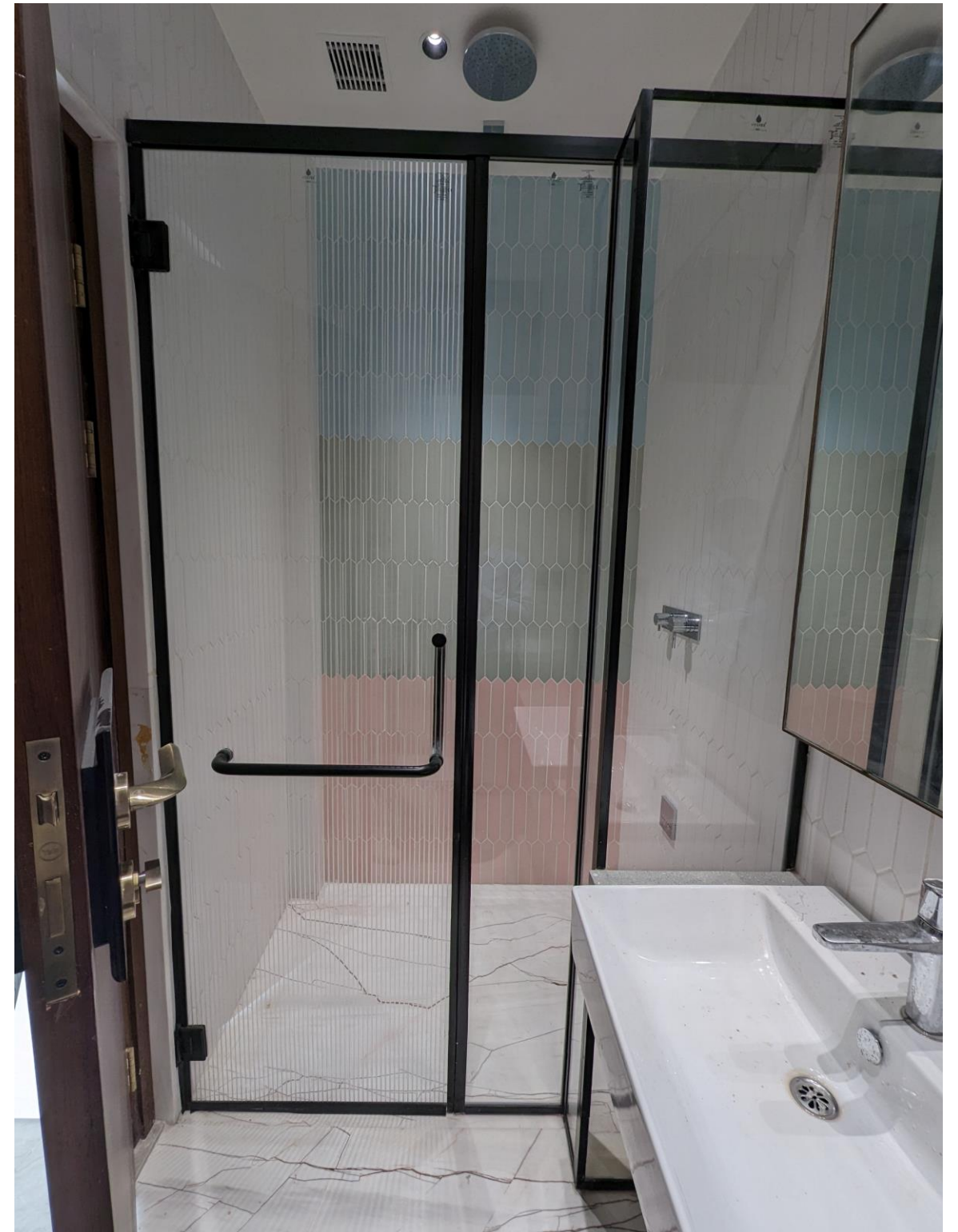
- Modern Design
- Full Frame
- Many Colours: Matt Black, Champagne Gold, Brushed Matt



# C1. Glass Shower Enclosures



## OPENABLE MODEL – FULL FRAME





# C1. Glass Shower Enclosures

**GLASS WITH SPECIAL LINES**

**Top Closed → Make your Shower into a Steam Room**





# C1. Glass Shower Enclosures

**FIXED ONLY – Framed Model**



**FIXED ONLY – Clamp Model (Rose Gold Hardware)**



# DESIGN ELEMENTS – TOILET CUBICLES



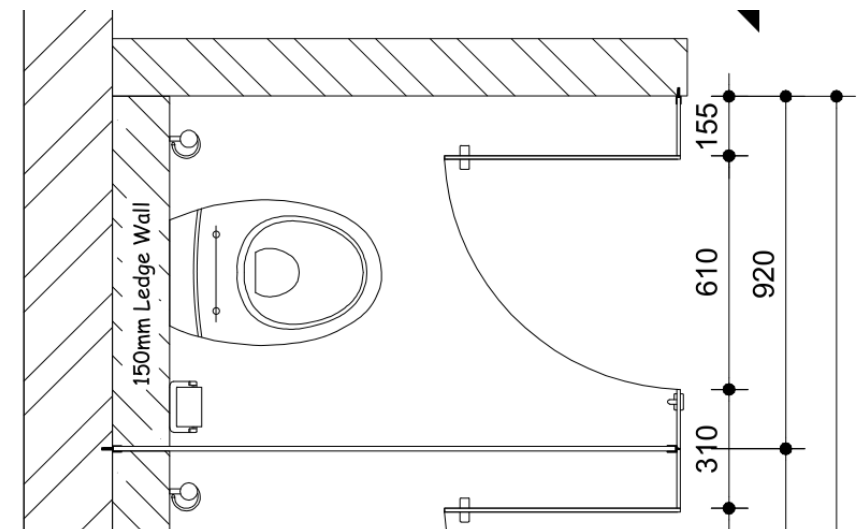
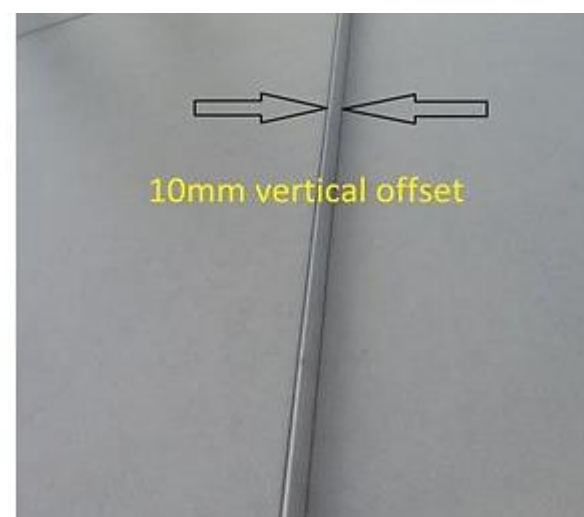
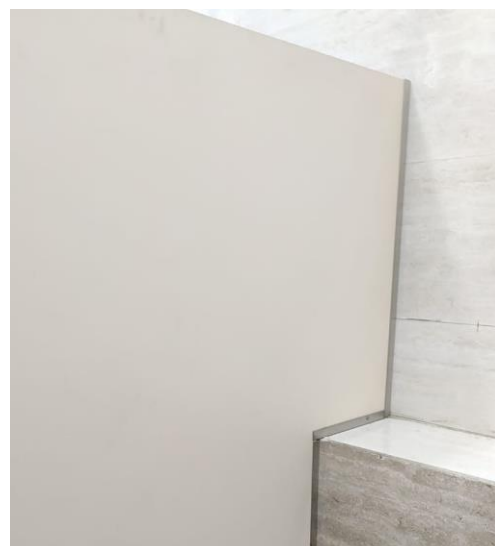
**LEDGE WALL – Option 1**



**LEDGE WALL – Option 2 (no L Cut needed)**



**TILE DROP**





# DESIGN ELEMENTS – SHOWER GLASS



**LEDGE WALL – Glass Behind Ledge**



**LEDGE WALL – Glass L Cut over Ledge**



**NOTE: It is ALWAYS  
preferable to place  
Glass Partition  
ABOVE Tile Drop**



# DESIGN ELEMENTS – WELLNESS



## BATH TUB in OUTDOOR GAZEBO





# CONCLUSION

---



We at HYGREE are sure that we can offer a modern washroom solution for your landmark project, that represents an optimal combination of design, utility, aesthetics, and economics – truly blending function and form.

We look forward to work with the accomplished team members coming together to make your project a grand success.

**Thank You**

---

**HYGREE INDIA INDUSTRIES PRIVATE LIMITED**

+91-98410 41660 | [projects@hygree.in](mailto:projects@hygree.in) | [www.hygree.in](http://www.hygree.in)